



INLAND SEAS EDUCATION ASSOCIATION
2021 ANNUAL REPORT

Our Mission

Inspire a lifetime of Great Lakes curiosity, stewardship, and passion in people of all ages



Message from the Director

You know that feeling you get when things just keep falling in place? When you have a high degree of confidence in your direction? When you receive regular positive feedback that you are making a difference? I'm feeling all of this and more as I reflect on this momentous year and I sincerely hope you feel it too.

We began the year with an introduction to our new Strategic Plan called Schoolship and Beyond. This plan focuses on fully utilizing our campus, growing our audience base to engage more underserved communities, and expanding our programming to include unique ways to learn about the Great Lakes during the times of the year that our iconic schooners cannot

sail on the lakes. I am amazed at how much we have already accomplished. (See the 2021 Highlights section below.)

What began as six months of ship-based programming during the viable sailing season has grown to year-round programs that connect learners to the Great Lakes both on the water and from land. We are excited to incorporate the adjacent property, an extraordinary gift received at the end of the year, into our strategic plan and will continue to keep you updated on its use. It is an incredible honor to do work that makes a positive difference in this world and I'm so thankful to do it in partnership with you.

Fred Sitkins, ISEA Executive Director

2021 Highlights

- Ship and Shore program demonstrated concept for year-round program offerings
- Kindergarten/first-grade program established early education delivery options
- Built and strengthened strong partnerships around the Great Lakes including Detroit-based youth organizations, colleges and universities, and other environmental organizations
- Remodeled the Education Center to focus on the Great Lakes food web
- Hired Dr. Trisha Smrecak as our Education Coordinator
- Schooner *Inland Seas* sailed in Lake Superior for the first time
- Developed a team of teachers to support new program development, implementation, and evaluation
- Promoted Juliana Lisuk to new Associate Director position
- Purchased property adjacent to Suttons Bay campus for future programming

A young person with dark skin, wearing a camouflage-patterned hooded jacket with orange trim and a pink wristband, is smiling and holding a small, dark-colored fish in their cupped hands. The background shows a boat's railing and a body of water under an overcast sky. A semi-transparent grey box with text is overlaid on the center of the image.

On the Great Lakes 2021

9 Ports ~ 168 Programs ~ 3,427 Participants

Program Impact in Northern Michigan

“This is exactly the type of programming and partnership that makes for extraordinarily special experiences for students. We are honored to work with ISEA and help in efforts to extend their reach inland and into nearby rural communities.”

~ SEEDS Executive Director, Sarna Salzman



Student collecting benthos sample from ISEA pond during a Ship and Shore program.

Programs Offered in Suttons Bay and Surrounding Area

Ship and Shore Schoolship

Next Gen Schoolship

Diving Deeper Schoolship

ROV Engineer and Explore

Great Lakes Watershed Field Course

Public Day Sails

Private Charters

Ladies on the Lake

ISEA Cafes



Educators from seven of the eight Great Lakes states participated in the 2021 Great Lakes Watershed Field Course.

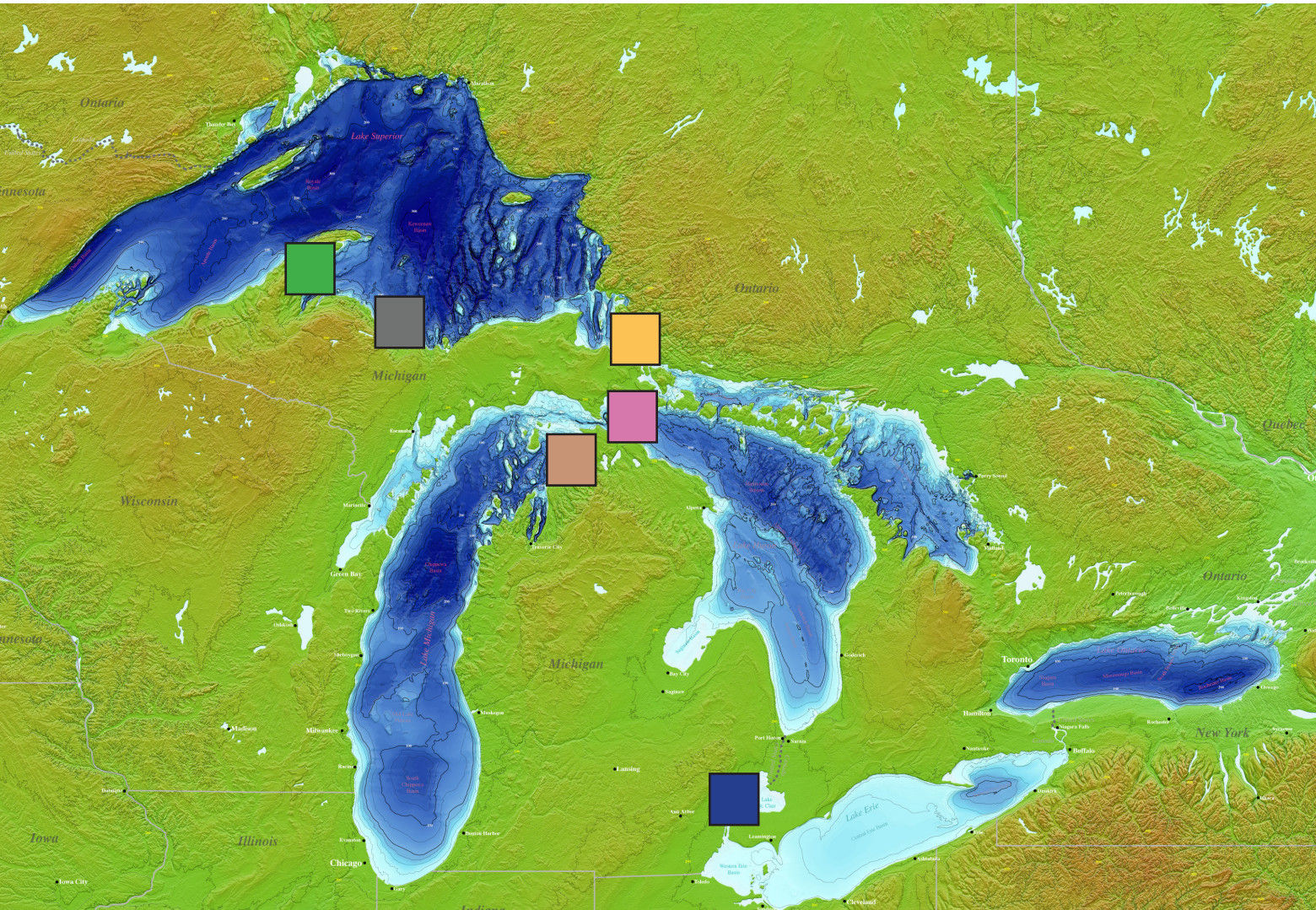
“I’ve taught the water cycle for the past 10 years. However, I’ve never taken it to the watershed [level]. This course gave me tons of ideas, lessons, and standards for my classroom.”

“The PD gave me concrete tools to use in the classroom and connected me with other teachers that shared great ideas. It gave me inspiration and a method for helping students solve problems.”

“Exceptional quality learning experience. I haven’t had something this engaging in my educational career since graduate school that ended in 2003.”

“One of the best PDs I have attended.”

Program Impact Around the Great Lakes



PC: NOAA Great Lakes Environmental Research Laboratory

MARQUETTE

Partners: MSU Extension, MI Sea Grant, Marquette County 4-H, Hannahville Indian Community, Northern Michigan University - Center for Native American Studies, MiSTEM Network, Superior Watershed Partnership

“Our pivotal partnership highlighted the ecological, cultural, and traditional wealth of the largest Great Lake to participants from 3 to 80 years old and exemplified the diversity and breadth of informal education available when collaborating with the excellent team at Inland Seas. For many, these three programs offered an unprecedented opportunity to explore Lake Superior from an unparalleled perspective: on the water.” ~ Martha M. Gerig, Ph.D., Extension Educator, Michigan Sea Grant

HOUGHTON

Partners: MSU Extension, MI Sea Grant, Keweenaw Bay Indian Community’s Natural Resource Department, Michigan Technological University - Great Lake Research Center, KBIC tribal members, MiSTEM Network

Program topics included stories of the geoheritage of the lands and waters, importance of these lands and waters to the tribe, implementation of treaties and challenges for reaffirmation of their rights, and the cultural importance of the local fishery.

CHARLEVOIX

Partners: Camp McSaubia, Charlevoix Recreation Department

HESSEL

Partners: Les Cheneau Watershed Council, NaCASE - Department of Defense

SAULT STE MARIE

Partners: MSU Extension, MI Sea Grant, Sault Ste. Marie Tribe of Chippewa Indians, Lake Superior State University, MiSTEM Network

Participants learned how the Sault Tribe both manages and relates to the local waterways, the cultural importance of this area to local indigenous people, how the Lake Whitefish populations has been changing due to invasive species, how the growth rate of various fish species has changed based on river conditions, and cultural lessons.

TRENTON AND THE DETROIT RIVERFRONT

Partners: Detroit International Wildlife Refuge, Detroit Riverfront Conservancy, University of Michigan Detroit River Story Lab, Detroit Parent Network, Best Classroom Project

Sponsor: DTE Energy Foundation

“Many of the young folks have seen the Detroit River but had never experienced being on it or being on a schooner...hearing the sounds of the River and having a calm quiet moment just listening to the water, the seagulls, etc. One young person told me, “Mr. Ross, this was an awakening to a new opportunity...my journey on the Detroit River. No one in my family has ever done this. I truly see the world a little different now.” What a powerful moment, expressing a new educational experience on a schooner!” ~ Bruce Ross, Associate Director of Green Door Initiative

“I was fortunate to be included as a river historian on one of the Detroit River Story Lab cruises and enjoyed a wonderful interaction with students aboard the schooner *Inland Seas*. Watching them learn a bit about sailing, a bit about the underwater environment, and a bit about their city - on such a unique platform - was priceless. Beyond those on board, visitors to the river understand its historical importance better when they see large vessels - particularly schooners - using it as a thoroughfare, passing the skyscrapers.” ~ Joel Stone, Curator Emeritus, Detroit Historical Society (Read Joel’s full story on the next page.)

“Watching them learn a bit about sailing, a bit about the underwater environment, and a bit about their city - on such a unique platform - was priceless.”

~ Joel Stone, Curator Emeritus, Detroit Historical Society

February 24, 2022

I first met with Dr. David Porter several years ago over coffee. He had lots of ideas for the Great Lakes Theme Semester he was directing for the University of Michigan, and his enthusiasm was infectious. Sympathetically – we’re both sailors – I shared many of the successes and pitfall he might expect with trying to put a schooner program on the Detroit River.

Fortunately, he found a great partner in the Inland Seas Education Association (ISEA), and the inclusion of their vessel in the 2021 Detroit River Story Lab (DRSL) project ensured its success. I was fortunate to be included as a river historian on one cruise, and enjoyed a wonderful interaction with students aboard the schooner Inland Seas. Watching them learn a bit about sailing, a bit about the underwater environment, and a bit about their city – on such a unique platform – was priceless.

Porter and the DRSL team, working with the school ship’s navigation and education crew, provided an unforgettable experience for dozens of local young adults. Seeing the river is one thing, but getting people – especially younger folk – on the river makes it theirs. The importance of this cannot be overstated.

Beyond those on board, visitors to the river understand its historical importance better when they see large vessels – particularly schooners – using it as a thoroughfare, passing the skyscrapers. Additionally, DRSL’s regional maritime partners, including the ISEA and the Dossin Great Lakes Museum, benefit from broader community interactions and wider public understanding of their mission.

The efforts of U-M’s DRSL are admirable. As a lifelong Detroiter and maritime historian, this is the most broadly inclusive, maritime-focused, educational initiative to be launched along the Detroit River in recent memory. ISEA was a big part of its success.

Joel Stone
Curator Emeritus
Dossin Great Lakes Museum
Detroit Historical Society

Personnel Changes

Durng 2021, ISEA hired a new Program Coordinator/Office Manager, added Associate Director and Education Coordinator positions, and reassigned responsibilities in some roles.



L-to-R: Ben Hale, *Inland Seas* Captain; Juliana Lisuk, Associate Director; Izzy Cooper, Program Coordinator/Office Manager; Rachel Ratliff, Volunteer Coordinator; Jillian Votava, STEM and Intern Coordinator; Trisha Smrecak, Education Coordinator; Fred Sitkins, Executive Director

More Intern Support

We partnered locally with Northwestern Michigan College in 2021 to provide educational intern experiences for their students during our busy Spring Schoolship season. In collaboration with the University of Michigan, we are also designing an internship where their students will develop and implement Detroit River-related activities on our schooner in July 2022.

Continuation of these strong intern partnerships provides educational experiences for student growth, staffing when we need it the most, and opportunities to build Great Lakes stewards.

Jillian Votava, STEM and Intern Coordinator

Reflection of an Intern

Teresa Noah, ISEA Education Intern
Partnership with Northwestern Michigan College

"I can still remember my first official day of programming. It was a chilly May morning and I was instructing the map station. It was my first time working with kids so I was very nervous. As I kept instructing, group after group, my nerves melted away and I felt an excited confidence I had not felt before. Working with children and inspiring love for the Great Lakes became something I looked forward to each day.

Inland Seas created an amazing environment for me to learn and grow. I became much more confident in my communication skills along with learning how important going with the flow is to having a successful program. The staff and volunteers are all incredible and want to see me succeed. I am very appreciative of them and the mentorship I have been given."

Volunteer Impact

Volunteers Earn Lake Sturgeon Award

In Great Lakes sailing lore, someone who perseveres long enough to sail on all five Great Lakes qualifies for a lake sturgeon tattoo. In 2021, two long-time Inland Seas volunteers qualified for this award.

Both Emma Kelly and Rob Chapman began sailing aboard the schooner *Inland Seas* on her maiden voyage in 1994 (see top photo). Rob was volunteer crew and Emma (at 18 months) was the official “smile maker.” They, along with the rest of the crew, sailed through Lakes Ontario, Erie, Huron, and Michigan during that trip home to Suttons Bay. But it wasn’t until July of 2021 that *Inland Seas* touched the waters of Lake Superior with Emma and Rob onboard (though unfortunately not at the same time). Rob is still a crew member and Emma is now an instructor.

“What an incredible feeling to come out of the Soo Locks and gaze west at that endless expanse of water. I got shivers realizing that this was the first time Lake Superior waters were splashing against our hull. My dad [Tom Kelly] had dreamed of this moment for years. He would be so proud knowing that his ship and his vision had finally made it to the northernmost Great Lake.” ~ Emma Kelly

“It’s a privilege to have persevered long enough to qualify for this award. I don’t think that I’ll be getting the tattoo, but I will cherish the memories of earning it. I only wish that Tom could have been with us this summer.” ~ Rob Chapman



VOLUNTEERS

81

**Adapted to new programs.
Sailed the Great Lakes.
New Bosun crew position.**

VOLUNTEER HOURS

6,191

**We appreciate you! Your
passion for protecting the
Great Lakes amazes us.**

TIME VALUE

The value of those hours

\$185,420

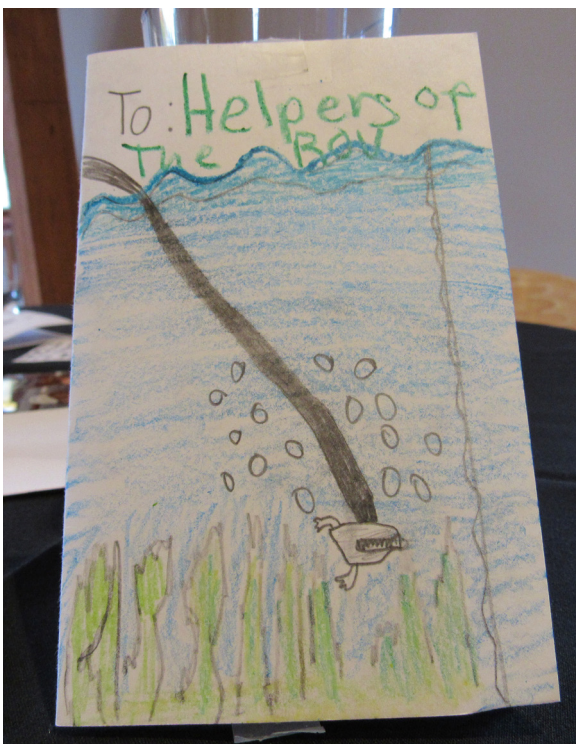
**(Based on estimated
national value by
Independent Sector.)**

2021 Volunteers

Rob Baier
Emma Baird
Jim Bennett
James Bielak
Scott Blair
Mark Breederland
Jeff Brown
Denise Carson
Juliette Cerny
William Chaney
Rob Chapman
Lee Christens
Sue Chrostek
Bradley Clements
Doug Coffin
Maribeth Condon
Pat Curtin
Bob Davidson
Michelle Derouin
Phil Diller
Allan Edford
Jill Egan
Kim Eike
Sue Erdmann
Mike Foley
Mike Gillette
Jim Glover

Fred Hall
Jackie Hall
Harry Hollowell
Gina Harder
Matt Heiman
Jim Henry
Sal Hernandez
Abbey Hull
Bette Jackson
John Jacobson
Mike Jacobson
Barb Janowiecki
Paul Janowiecki
Randy Karfonta
Emma Kelly
Harold Lassers
Dan Lisuk
Laurie Lisuk
Pete Magoun
Dave Maynard
Tom Maynard
Ernie Mendenhall
Jack Messer
Emma Moulton
Teresa Noah
Anne O'Dell
Marcia Olsen

Linda Posler
Chris Raterink
Dale Rolley
Kathy Sanders
Kathy Schaeffer
Deborah Schankler
Deborah Scott
John Seefeld
George Seifried
Lynn Shattuck
Linda Shaw
Margaret Siegrist
Michael Siegrist
Frank Simkins
Marta Slocum
Dena Smith
Sally Somsel
Wayne Steinhour
Sarah Sullivan
Bob Walton
Tom Wenstrom
Bob Weyand
Nate Winkler
Antony Wright
Judy Wright
Thom Yocum
Mandi Young





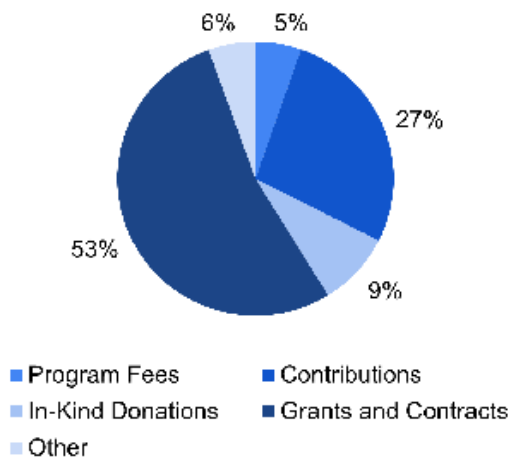
Inspire future Great Lakes scientists and stewards at schoolship.org/donate.

Financial Impact

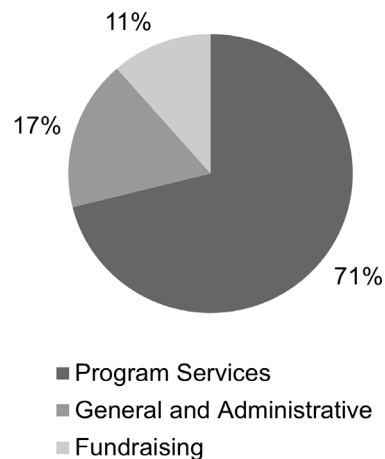
“Our Great Lakes are precious. The more people that understand that the more the next generation will take care of them.”

~ Donor Nancy Doughty

Total Revenue
\$2,567,170



Total Expenses
\$1,540,639



ISEA changed its fiscal year from July-June to a calendar year in 2021. Data above reflects revenues and expenses for the 18-month period ending December 31, 2021 as audited by Maner Costerisan. Revenues include a \$740,000 donation from the Edmund F. and Virginia A. Ball Foundation, Inc. for the purchase of the adjacent property to our Suttons Bay campus.

Our ability to inspire Great Lakes curiosity, stewardship, and passion would not be possible without the continued support of our donors. We appreciate your trust in stewarding your resources to provide Great Lakes education.

Edmund F. and Virginia B. Ball Foundation Inc.

The Herbert H. & Grace A. Dow Foundation · The Les and Anne Biederman Foundation
The Brookby Foundation · Great Lakes Fisheries Trust · Consumers Energy Foundation

Rollin M. Gerstacker Foundation · The Alden and Vada Dow Family Foundations · Mariel Foundation
Worthington Family Foundation · The Oleson Foundation · Grand Traverse Regional Community Foundation

Cherry Republic, Inc. · TUKTAWA Foundation · Rotary Charities of Traverse City · Zonta Club of Lansing
HP Foundation · Grand Traverse Band of Ottawa and Chippewa Indians · Julius H. and Barbara B.
Beers Family Foundation · Rotary Club of Suttons Bay-Leelanau County · Robet Foundation

2021 Donors

Captain's Circle Members (\$1,000+)

Dr. David Anderson	Green Brick Foundation
Nancy Anderson	Rodney Groleau
Anderson Family Charitable Fund	Robert and Nancy Hagerman
Lois Bahle and Larry Mawby	Raymond Hale
John Bevington and Tina Greene-Bevington	Harry and Lynne Hallowell
Richard Bingham	Lee Hepner
Warren and Beverly Boos	Herrington-Fitch Family Foundation
Webb Buell	Gail and Bob Hetler
Leith and Gloria Butler	John and Martha Hicks
Cherry Republic	Rick Howard
David Clark and Pique Kirk	HP Foundation
Edward and Barbara Collins	James and Diana Huckle
Consumers Energy Foundation	David and Nancy Hunter
Howard and Mary Cook	Bette Jackson
Patrick and Margaret Curtin	John Jones and Joan Volkmann
Barbara and Bill Danly	Julius H. and Barbara B. Beers Foundation
Annette Deibel	Susan Kelly
Laura Deibel	Harvey and Mary Krantz
Robert and Nancy Doughty	Harold and Pam Lassers
Michael and Rhea Dow	Dan Lisuk and Laurie Leppink Lisuk
Gary and Sandy Drew	Brad Lyman
Harry Dryer	Anne Magoun
Nancy and Berkley Duck	Peter Magoun
Darcy and David Dye	Mariel Foundation
Edmund F. and Virginia B. Ball Foundation, Inc.	Graham and Peggy Martin
William Encherman	Sharron Matthews-Gay
Timothy Feist and Laurel Braatz	Dee McClure
Mason and Mary Kaye Ferry	Robert and Eleanor Miller
Jeffrey and Nancy Fisher	Bonnie Mills and Douglas Eicher
Mark and Julie Forbes	Elizabeth Mostrom
Martha Garber	North American Association for Environmental Education
Grand Traverse Band of Ottawa and Chippewa Indians	Robert and Tawny Nelb
Grand Traverse Regional Community Foundation	Frank Noverr and Toni Tonda
Boys and Girls Club Endowment	Roberta Poor
Gardner Mahalo Fund	Donna Popke
Genuine Leelanau Charitable Endowment	Gilbert and Nancy Powers
Gordon B. Brown Memorial Endowment	Stephanie Prechter
Jim Tompkins Endowment for Youth	George and Carol Quaderer
John N. Barnes Environmental Education Endowment	R. M. Young Co.
Lawrence and Susan Burks Family Endowment	Pat and Terry Reay
Lee Scholarship Endowment in Memory of Tom Kelly	Dan Remahl
Marsha J. Smith Community Leadership Fund	James Richardson
Richard V. and Kimiko O. Williams Endowment	Jerry Ring
Robert and Pauline Young Family Endowment	Robet Foundation
Suttons Bay and Bingham Endowment	Rollin M. Gerstacker Foundation
The Land Use Conservation and Planning Endowment	Rotary Charities of Traverse City
Great Lakes Fisheries Trust	Rotary Club of Suttons Bay-Leelanau County

Captain's Circle Members (continued)

Kathryn Schaeffer and Gary Roll
John and Lesa Seefeld
Fred and Lisa Sitkins
Bill and Kathy Small
The Alden and Vada Dow Family Foundations
The Brookby Foundation
The Herbert H. & Grace A. Dow Foundation
The Les and Anne Biederman Fdn
The Oleson Foundation
Mary Tonneberger
TUKTAWA Foundation
Howard Veneklasen
David and Beverly Verdier
Dr. William Weiss
James and Kathy Westlake
Bob and Mary Weyand
William R Hoff Sr Trust
Randy and Joan Woods
Worthington Family Foundation
Thomas and Kaye Yocum
Robert Young, III
Zonta Club of Lansing

ISEA Members (\$100-\$999)

Porter and Anita Abbott
Hugh and Julie Acosta
Janis Acosta and Daniel Ninivaggi
Mark and Connie Adamson
AKIN
Hayette Ald
Amazon Smile
Philip and Mary-Lis Andrus
Dennis and Kim Armbruster
Bruce and Judy Balas
Cathie Ballard
Christopher Barge
Joe Bartz and Chandra Schorg
Bruce and Dorothea Beltman
James Benedict - Woodbine
The Benevity Community Impact Fund
William Betts
Cory Beuerle / Century 21 Northland
James Bielak and Blair Patch
Dewey Blocksma
Dale and Joan Blount
Harry and Stephanie Blount
Gil and Anne Bogley
Ann Bollinger

Amy Bolmer
Gary and Mimi Borucki
Julia Braverman
Paul and Amanda Brink
Doug Brinklow
Keith and Joanne Burnham
John Byers
Charles and Susan Cady
Susan Cahn and Mario Batali
John and Mary Caldwell
Joseph Capuano
Mark Carlson
Caryn Azure Photography
Heather Catallo
Kathleen Cavanaugh
J. Kenneth and Marilyn Cerny
Gail Chambers
Stephanie Chambers-Duckman
Jan Chapman
Lillian Chapman
Dave and Sue Chrostek
Daniel Cline
John and Laura Collier
Robert and Diane Collier
Edwina Collins
Communities First, Inc.
Larry Coppard
Barbara Coye
W. Scott Craig and Carol Bawden
Howard and Nancy Crisp
John and Barbara Curphey
Stacy Daniels
Thomas Darnton
John R Davies
Mark Davis and Mary Sue Kranstover
Richard and Ann DeBoer
Anthony DeRose
Tiffany DeShano
Phillip Diller
Susan and James Dutmers
Martin M. Easling
Roger Eberhardt
Allan Edford and Darlene Urso
James and Jill Egan
Marshall Evans
Rebecca Ewing and Charles Eichenlaub
Timothy Faas
Hugh and Betty Farber

Doris Fauth
Brian Fisher
Jerrold M. Fisher
William and Kathryn Fitzgerald
Bob and Marlene Flannery
John and Maureen Fletcher
Thomas Flint and Constance Dugan
Michael Foley
Stephen V. Gardner
Stephen Gardner, Jr.
Douglas and Shirley Gembis
Thomas Gentile
Bob and Nancy Giles
Diana Glendon
James and Linda Glover
David and Penelope Gordon
Don and Jane Gorski
Larry and Barbara Graves
Charlotte and David Gray
Daniel and Norma Green
Jennifer Greenwell
Donald and Ann Gregory
James and Jan Gross
Richard Grout
Richard Halbert
Fred and Elaine Hall
Harborview Yacht Sales LLC
Gina Harder
John and F. Susan Harrison
Rebecca Hastings
David and Margaret Hauser
Vera Hernandez
Michael and Christine Heroy
Douglass and Marguerite Hickman
Hillquist Family Foundation
Caroline Hirth
William and Suzanne Hoff
Jerriann Holleman
Amanda Holmes and Daniel Stewart
Calvin and Kathy Holser
James Houk
Carol Inman
Mark Jensen - Jentees
Keith and Claudette Johnson
F. Randall Karfonta
Kirby and Nancy Keller
Marinus Keller
Anne Kelly
Emma Kelly
John and Connie Kerns

Ed and Linda Ketterer
Len and Connie Klein
Russ Knopp
Edward Kocher
Betty Koons
Matthew Koser
Arthur Krumrey and Cinda Berry
Ward and Carol Kuhn
Dan and Karon Laviolette
Deloris Leppink
William Leugers, Jr.
Jean Libcke
Kathryn Linenger
Tim Liston
Halley Lisuk
Phil and Jennifer Loud
Karl Lundquist
Steve Magoun
Marlis Mann
Cathy Markes
Leonard Marszalek
Paul and Susan McEwen
Timothy McKay
William McKinley and Judith Briggs
Margaret and Jack Messer
Richard and Sue Miller
Robert Moler
George Moore
William and Marguerite Muempfer
Andrew and Ann Munch
Kenneth and Pat Musson
Mark Nesbitt and Sara McVay
Jennie Nestor
Peggy Noah
David and Yvonne Nordstrand
Michael O'Donnell and Jan Garfinkle
Anne Oliva
James Olson and Judy Bosma
Oltersdorf Realty LLC
Michael O'Neill
Steven J. Orr
Peter and Jan Ostrowski
Leo and Patricia Paveglio
PayPal Giving Fund
Craig and Lisa Pearson
Elmer and Ruth Peterman
Bonnie Petersen
Mary Petterson
Nandakishore Rajagopalan
Milda Ranney

Charlotte Read
Daniel and Jan Reelitz
Robert Reider and Susan McCraven
William Renz
Kent and Mary Ann Reynolds
Gary and Anne Rogers
Ted Roll
Dale Rolley
Sandra and Gary Rouwhorst
Brenda and Bill Rustem
Duanne Salswedel
The San Francisco Foundation
Ross and Kerry Satterwhite
Andy Schaedel
Deborah and George Schankler
Thomas and Susan Schmidt
Lawrence and Barbara Schneider
Peter and Helen Schulze
Kathy and Bob Schwartzenberger
Jack and Susan Seaman
George and Deanna Seifried
Deborah Shank
Duane and Peg Shaw
Shell Oil Company Foundation Matching Gifts
Timothy Sherck
David and Rita Shookman
Michael Silver and Sue Woll
Frank and Gloria Simkins
Leah Sirrine-Adams
Thomas Skinner
Robert Skoff
Ted and Kelly Slater
B. A. Smith
Sally and Jackson Smith
Dick and Pat Solem
Sally Somsel
George Starkschall
Steelcase Foundation
Charles and Jacqueline Stein
Seth Stein
Dianne Stephenson
William Straley
Wayne and Patricia Swallow
William Swift
Elizabeth Swift Redding
Dorothy Tedesco
William Thacker
John and Martha Thiede
Herman and Laurie Thomas
Catherine Turnbull

David and Karen Ufer
Gloria Veltman
Douglas Verellen
Kent Walker
Linda Walter
Bob and Marsha Walton
Kennard and Judith Weaver
Walker & Dunlop
Mr. and Mrs. Richard Weiermiller
Maggie Weinert and Shawn Oudsema
Matt Whybark
Dave Williams
David and Roberta Williams
Richard and Betsy Wilson
Deborah Witherspoon and William Marbach
Allen and Janice Wolfe
Judy and Antony Wright
Robert and Pauline Young
Ron and Kat Zagel
David Zimmerman
Michael and Ann Zipser

ISEA Donors (\$1-\$99)

Larry Hauser and Barbara Abbott
Bill and Nancy Allen
Catherine Annelin
Gary and Christi Bardenhagen
Patrick Barry Jr.
Andrea Becker
Loren and Joan Bensley
Ken and Janet Bergsman
Trina Block Ochs
Don and Susan Bogue
Karen Boomer
Tracy and Markk Brant
Rich and Marty Brauer
Dorothy Bruce
Chris Campbell
Anthony Careatti
Terry and Jody Clark
Tim Curtin
Allen and Jane Damschroder
Robert Davidson
Rita Dickie
Thomas and Polly Dilloway
Barbara Dove
Douglas and Sheridan Drake
D. Edward and Ann Emenheiser
Mark and Annette Evans
Fidelity Brokerage Services

Mike Fleishman
Armen and Carolyn Googasian
Gerry and Bonnie Greene
Scott and Susan Hagerman
Philip Hamburg
William Hansen
George Hermach
Donovan Hohn
T Michael and Joan Jackson
David and Tracy Jelneck
Lois Jelneck
Karen Kennedy
Collin Knauss
Ellen Kohler
AnnMarie Kotre
Leelanau Township
Virginia Leonard
Richard and Colleen Lewis
Timothy C. Lund
Gloria McClay
Ernie Mendenhall
Taylor Moore
Susan Mostrom
Barbara Neufer
Eugene Nissen
Theresa O'Brien
Mark and Anne O'Dell
Susan Ulrich Olsen
Claudette and Ken Opland
Jeanette Ott
Geoff Parker
Brenda Pearson
Donald Penniman
Mary Peters
Chuck and Sally Plachetzki
Sara and Charles Rodeck
Gerald Schatz and Barbara Conley
Aaron Schillinger
Miriam Scott
Mary Shirley
Barbara K. Smith, Ph.D.
Charlotte Sommers
Dennis Starner
Mark and Denise Stephens
William Strait and Jessica Rickert
Sarah and Larry Stump
Sara Switzer
Joseph Torrence
Gretchen Townshend
Rosemary VanOosterhaut

Ronald J. Walton
David Watt and Becky Watt
Christine Weber
Patricia Weber
Ronald and Carol Wetzel
Richard and Louise White
Donald Willman
Michael Wills
Nancy and Lyle Wilson
Sarah Woodside Gallagher
Mary Workinger
Michael Worzniak and Laura Arbaugh

Gifts-in-Kind

Richard Bingham
Bluewater Sail Loft
Harold Borden
John and Barbara Curphey
Mark Davis and Mary Sue Kranstover
Ed Dolan
Earthen Ales
Jerrold M. Fisher
Mike Fleishman
Martha Garber
Kathy Haynes
Michael and Marsha Howard
George Jepson
L. Mawby Vineyards
Robert Lieder
Graham and Peggy Martin
Margaret and Jack Messer
MiddleCoast Brewing Company
Jane Neuharth
Frank Noverr and Toni Tonda
Geoff Parker
Bill and Loretta Parrish
Tom Petersen
Andreas Prindl
Paul Purifoy
George and Carol Quarderer
Steve Redding
James Richardson
Deborah Robbins
Gerald Schatz and Barbara Conley
Sehi Computer Products Inc.
Shady Lane Cellars
Tandem Ciders
Kate Thornhill
Bob and Marsha Walton
Fred and Donna Winters

Gifts have been made in memory or honor of:

Steve Ballance
James C. Baldwin
Trevor Bowden
Lawrence Burks
Thomas Caldwell
Dr. Ruth Cantieny
Kathie Carrick
Barbara Collier
Pat Curtin
Harriett DeRose
David Dickerson
Mike and Rhea Dow
Jack Ewing
Dr. Larry Garber
Joe and Florence Gembis
Barbara Gwinnup
Tom and Pamela Hagen
Robert L. Hagerman
Ben Hale
Carol and Jan Hale
Gail Hale
Ngaire M. Hepner
Bill Hoff

Dr. Julianne Hoff
Dr. John M. Houk
ISEA Volunteers Past and Present
Tom Kelly
Anne Kelly
Susan Kelly
Larry F Kennedy
Harold and Pam Lassers
Dr. John H. Libcke
Juliana Leppink Lisuk
Adam McClay
The Nelson Family
Ann Nichols
Norman Nielsen
Teresa Noah
David A Nordstrand
Joe Pearson
Vic Peterson
Bruce Popke
Eric Strickle
Pete Taylor
Katherine Wolcott Turner
Madeline C. Worzniak

We have made every effort to ensure the accuracy of this information. Please contact us with any errors or omissions.

ISEA Board Members

John Seefeld - President
Bill Chaney - Vice President
Sally Somsel - Secretary
Pat Curtin - Treasurer
Mark Forbes
Harold Lassers
Jerry Ring
Kathy Schaeffer
Thom Yocum



Inland Seas

EDUCATION ASSOCIATION

100 Dame Street #218
Suttons Bay, MI 49682



New experiences for youth on a Detroit Riverfront Conservancy program