

W
E
L
C
O
M
E



Inland Seas
EDUCATION ASSOCIATION

Captain Thomas M. Kelly Biological Station

WELCOME NOTE

Address: 100 Dame St, Suttons Bay, MI 49682

Business Hours Contact: 231-271-3077

After Hours Contact: 231-675-4914

Ahoy!

Welcome to the Captain Thomas M. Kelly Biological Station. We are glad you've decided to stay in our dorms and participate in our programs!

This guide is intended to provide you with everything you'll need to know for the duration of your stay including facility information, local eateries, and much more.

We hope you enjoy your stay in our ship-inspired bunk rooms and imagine yourselves drifting away to sleep to the lull of soft Lake Michigan waves. Please let us know if you need anything while you're here as our staff are happy to help.

Enjoy your stay in Suttons Bay.

Fred Sitkins
Executive Director
Inland Seas Education Association

IMPORTANT PHONE NUMBERS

In Case of Emergency Dial 911

Nearest Hospital

Munson Medical Center
1105 6th St.
Traverse City, MI 49684
231-935-5000

Fire Department

Suttons Bay Bingham Fire Department
201 N. St. Marys Ave.
Suttons Bay, MI 49682
231-271-6978

Police Department

Leelanau County Sherriff
8525 E. Government Center Dr.
Suttons Bay, MI 49682
231-256-8800

Animal Control

Leelanau County Animal Control
8525 E Government Center Dr.
Suttons Bay, MI 49682
231-256-9829

CHECK-IN INFORMATION

Access Code

Your group's main contact was provided a unique access code to enter the building. This code will be required each time you enter the building as the deadbolt will relock automatically each time you enter or exit the facility.

Parking

Complimentary parking for guests staying at the Capt. Thomas M. Kelly Biological Station is available on the east side of the building. You and your guests are welcome to park here for the duration of your stay at your own risk.

WIFI Network and Password

Please enjoy complimentary WIFI for the duration of your stay. WIFI network and password will be provided upon your arrival.

Supervision

Minors must be under adult supervision at all times. Please have at least one adult chaperone stay in each room where youth are present to ensure proper supervision. If a group of youth are interested in exploring our surrounding campus please have an adult chaperone them.

Quiet Hours

Quiet hours for the Capt. Thomas M. Kelly Biological Station are 11:00 PM to 7:00 AM each day. We politely request that all activities within the Capt. Thomas M. Kelly Biological Station and its surrounding campus (including all fires and outdoor activities) cease at or before 11:00 PM and that the campus remains quiet until 7:00 AM the following morning. Thank you for respecting our neighbors and surrounding community.

Capt. Thomas M. Kelly Biological Station Education Center Hours

The Capt. Thomas M. Kelly Biological Station Museum is open Monday-Friday from 8:30 AM-5:00 PM and closed on Saturday and Sunday. Please do not enter the museum space during non-business hours unless prior arrangement has been made with an Inland Seas Education Association staff member.

CAMPUS AMENITIES

Outdoor Classroom

The outdoor classroom is located in the southeast corner of our campus. This pavilion and surrounding firepit is a great place for outdoor lessons, discussions, and picnics. We invite you to use this space freely. After you're finished, please remove all garbage and deposit it into a bin at the facility to minimize the opportunities for animals from getting into the garbage.

Firepit and Gas Grill

You are welcome to use the firepit and gas grill during your stay. All fires and grilling must be supervised by an adult. After you are finished using the grill, please turn off the gas and return it to its original location. Once you are finished using the firepit, please put it out with water to ensure all flames, coals, and embers have been extinguished.

Wetland Walk

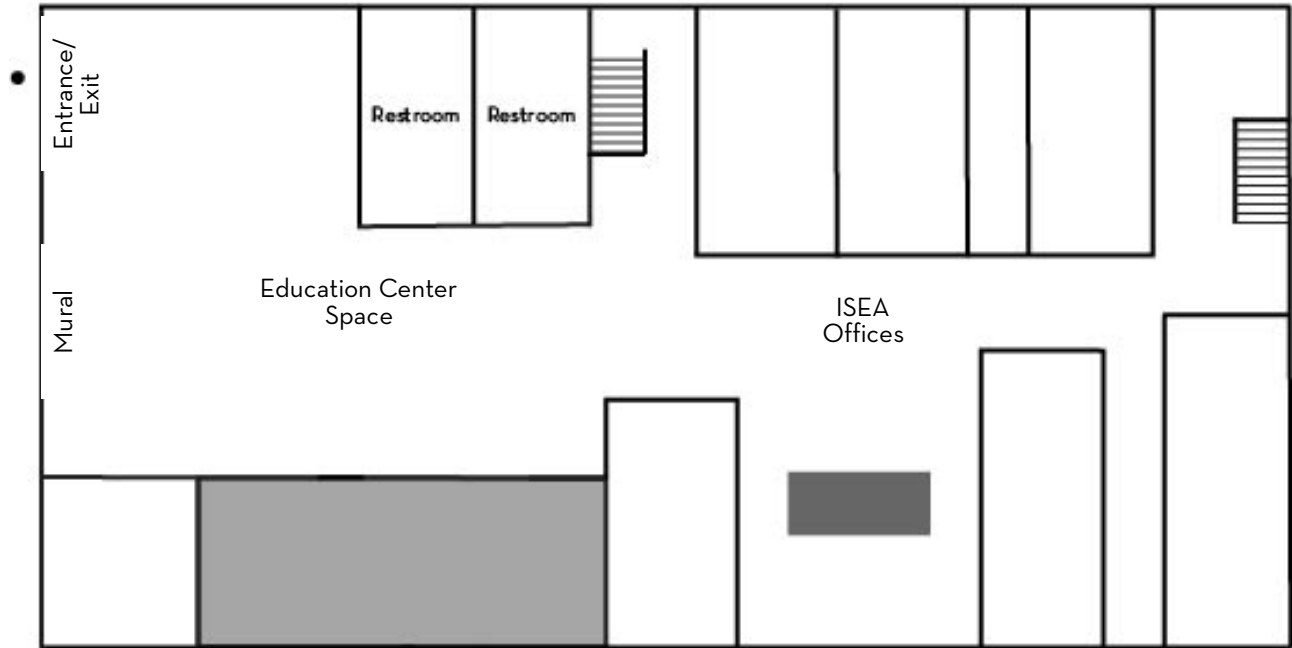
There is a short path along the wetland space that begins at the outdoor classroom. The path includes interpretive signage about wetland communities. Please feel free to use this space for lessons or reflections along the wetland.

Bikes

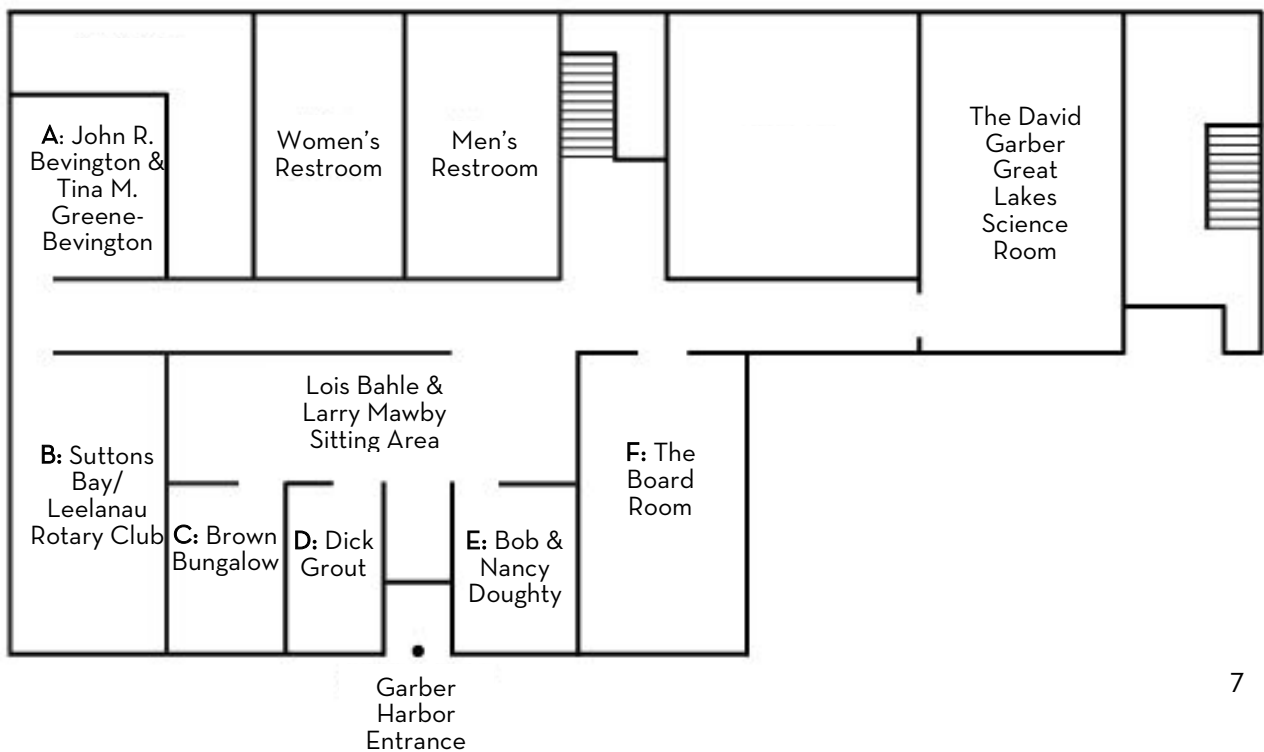
We currently have 30 bikes available for our dorm-stayers to use free of charge. If you're interested in using our bikes for a day, please reach out to the Program Coordinator for the key.

BUILDING MAP

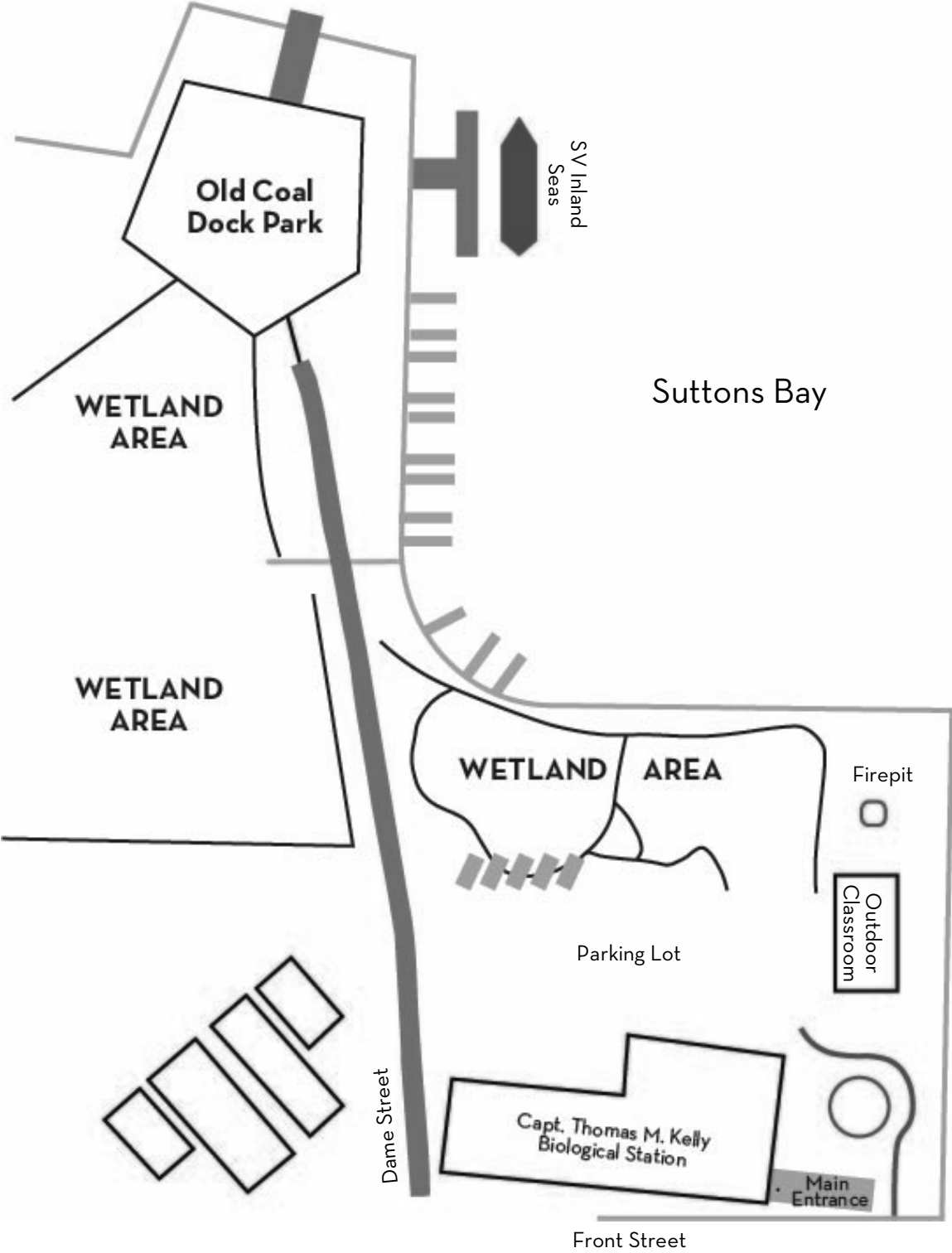
Upper Level



Lower Level



CAMPUS MAP



LOCAL STORES, EATERIES and ATTRACTIONS

Grocery Stores

Hansen Foods
91 W. 4th St.
Suttons Bay, MI 49682
231-271-4280

NJ's Grocery
115 W. Philip St.
Lake Leelanau, MI 49653
231-256-9195

Restaurants within Walking Distance

45th Parallel Café
102 W. Broadway
Suttons Bay, MI 49682

North Country Grill and Pub
420 N. St. Joseph St.
Suttons Bay, MI 49682
northcountrygrillandpub.com

Bay Burrito
206 N. St. Joseph St.
Suttons Bay, MI 49682
231-866-4082
bayburritocompany.com

Premonitions Pizza and Arcade
100-A Cedar St.
Suttons Bay, MI 49682
231-866-4494
premonitionspizza.com

Boone's Prime Time Pub
102 N. St. Joseph St.
Suttons Bay, MI 49682
231-271-6688
boonesprimetimepub.com

Roman Wheel Pizza & Subs
116 N. St. Joseph St.
Suttons Bay, MI 49682
231-271-4176
romanwheelpizza.com

Hang On Express
316 N. St. Joseph St.
Suttons Bay, MI 49682

Streetside Grille
111 N. St. Joseph St.
Suttons Bay, MI 49682
231-866-4199
streetsidegrillsb.com

Martha's Leelanau Table
413 N. St. Joseph St.
Suttons Bay, MI 49682
231-271-2344

V.I. Grill
201 N. St. Joseph St.
Suttons Bay, MI 49682
231-271-3300
vigrill.com

Wren
303 N. St. Joseph St.
Suttons Bay, MI 49682
231-271-1175

Hop Lot Brewing Co.
658 SW Bayshore Dr.
Sutton Bay, MI 49682
hoplotbrewing.com

Things to Do

Leelanau (TART) Trail
Paved 15 mile trail from
Suttons Bay to Traverse City

Suttons Bay Beach
416 Front Street
Suttons Bay, MI 49682

Leo Creek Preserve
Located 1/2 mile south of the
Capt. Thomas M. Kelly
Biological Station
behind Hansen Foods
Only Accessible via the
Leelanau Trail

CHECK-OUT CHECKLIST

Thank you again for staying with us! There are just a few things we would like you to help us with before you depart.

- Collect all of your group's personal items. Make sure you haven't left anything behind in a room or bathroom.
- Clean out the fridge. Please make sure you've removed all of your food items from the site.
- Wash and replace dishes. Please take a moment to wash and replace any dishes you've used.
- Close any windows you've opened during your stay.
- Pick up any trash and place it into the proper receptacle.
- Remove trash. Please consolidate the garbage from your rooms into one large bag (or more if necessary) and place them in the proper receptacle outside. Large garbage bags are located under the sink.
- Sweep floors in dorm rooms and common space. Take a few minutes to sweep any dirt, crumbs, or trash that may have fallen onto the floor in the spaces you used.
- Turn off the lights. Help us conserve energy by turning the lights off! (Note: The lights shining on the ships are on a motion sensor, so don't worry about turning those off).
- Secure the door behind you. The door will automatically lock, however, we would appreciate it if you could make sure it is secure once shut!
- Come visit us again. We would love to have you back!

Thank you in advance for being a steward of this space!